

Hello everyone! Welcome to our Newsletter.

Your Committee Members:

President	Barbara Wake
Vice President, Programme & Publications	Claire Drake
Secretary	Gloria Swann
Treasurer	Jan Gray
Minutes Secretary & Refreshments	Carol Smith
Registration & Helping Hand	Elizabeth Portsmouth
MCS Rep & Media Correspondent	Sue Edes
Fundraising	Patricia O'Connor

And here's a clip from the Zoom committee meeting held in November:
(Gloria was away that day, and sadly missed this photo shoot!)



As you know, we usually would have our Annual Meeting in the Autumn when we elect new Committee Members. However, we will of course be postponing the Annual Meeting till, probably, April next year. In the meantime, two of our committed committee members have stood down, they are Ann Smith and Maureen Bay. Your committee will be handing over small gifts of appreciation to Ann and Maureen for all their hard work and dedication to Wymondham Bridewell over the years, and we know you join us in saying a huge thank you to them both. Barbara has kindly agreed to stay as our President until we can vote for the President, and Claire Drake is now our Vice President.

Now for some light-hearted seasonal fun!



Did you know According to tradition, you should eat one mince pie on each of the **12 days of Christmas** to bring good luck. It's technically illegal to eat mince pies on **Christmas Day** in England. In the 17th century, Oliver Cromwell banned **Christmas** pudding, mince pies and anything to do with gluttony....

Why not raise FREE donations for our WI whilst you shop online:



The link is: <https://www.easyfundraising.org.uk/causes/wymondhambridewellwi/>


(If you need assistance, call Sue Edes for information!)



Did you know Mel Tormé's, "The Christmas Song", "Chestnuts Roasting on an Open Fire", was written during a summer heatwave in 1944

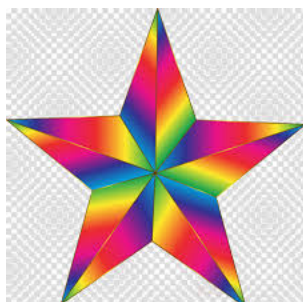
A seasonal recipe:

<h3>Clare's Christmas Log</h3>	
Ingredients	Decoration
<ul style="list-style-type: none">4oz/100g plain dark chocolate4oz/100g plain chocolate cake covering2oz/50g butter7oz/175g digestive biscuits2oz/50g marshmallows2oz/50g raisins2oz/50g walnuts	<ul style="list-style-type: none">3oz/75g plain dark chocolate150ml/1/4pt double cream
Method	
<p>1 Melt chocolate, cake covering and butter together. Break up the biscuits into the chocolate mixture. Cut up the marshmallows and add to the chocolate mixture, together with the raisins and walnuts. Mix well.</p> <p>2 Turn into a large square of foil and roll into a log shape about 20-25cm (8-10in) long. Wrap foil tightly around the log and chill overnight.</p> <p>3 Remove foil, turn on to serving plate.</p> <p>4 To decorate, melt the chocolate, allow to cool. Whip the cream to soft peaks and stir a little into the chocolate to loosen. Lightly stir in the rest of the cream and spread quickly over the log. Chill until set.</p>	



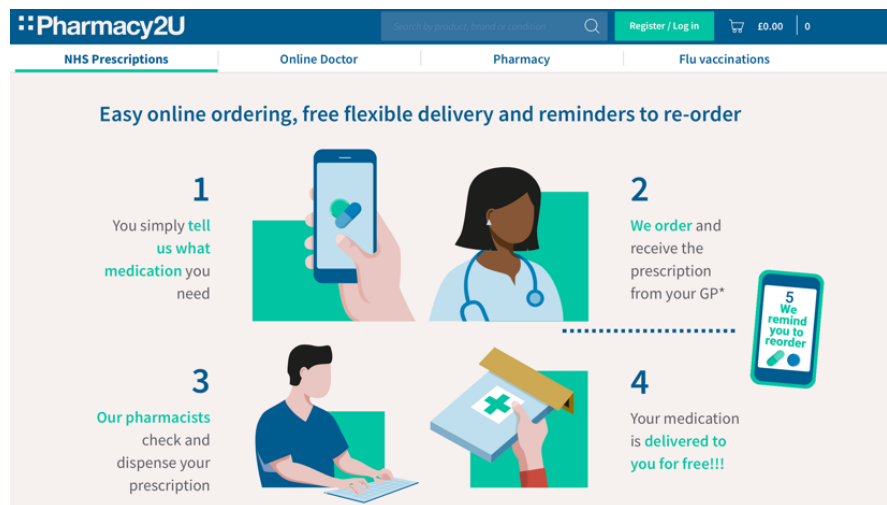
And did you know ...

Our WI sent a 'Make a Wish!' Christmas Decoration for the ES House Christmas Tree:



Message:
Hoping for a Healthy Happy New Year
from Wymondham Bridewell WI

Are you queuing in the cold for your medicines? Several Chemists will delivery locally, but if you prefer, you could sign up with Pharmacy2U and they deliver via Royal Mail to your door:



Is Rudolph a girl or a boy? Edinburgh University professors Gerald Lincoln and David Baird say **Rudolph** cannot be a **male** because **female** reindeer still have antlers at Christmas. Males shed theirs before mid-December!

BEST PUZZLE BOOK: The Ordnance Survey Great British Treasure Hunt (with foreword by Julia Bradbury) is a great stocking filler this Christmas!

This time, we're sent on a treasure hunt by the redoubtable Aunt Bea, who requires us to solve clues, brain-teasers, word games, codes and mathematical puzzles, as well as navigate our way around the country with the help of the famous OS maps, to find hidden treasure.

Well, do you recall the 2019 Centenary **'100 Norfolk Villages Quiz: 100 Villages for 200 pence?'** Wymondham Bridewell sent in several entries and our highest score was 93! Not bad for some of our members who have infiltrated the county from elsewhere! We did have fun, entries had to be submitted by 31 December 2019, and if the country was not in lockdown in 2020, Barbara and Sue were going to visit **North Gap** for an ice cream, but that little excursion is still on hold! Roll on Summer of 2021!

No. 28 Clue: Compass point + a narrow opening?

Correct Answer: Westwick

Barbara's Answer: Eastgate (quite good!)

Sue's Answer: **North Gap (I still think this is the best answer! Sue x)**



Here's the view of North Gap, just along from Eccles-on-Sea!

Did you know In Germany, Poland, and Ukraine, finding a spider or a spider's web on a Christmas tree is believed to be a harbinger of good luck. According to one legend, a spider wove a blanket for Baby Jesus, according to the other – a spider web on the Christmas tree turned silver and gold once the sunlight touched it. One way or another, decorating a Christmas tree with artificial spiders and spider webs will inevitably bring you luck and prosperity!



Were you a **Sindy Girl**?

Don't miss page 42 of WI Life this month! 10% off for all WI members ...

Sindy is making dreams come true for girls all over the world, generation after generation. But what did she cost in 1963? Was she on your Christmas List? Is she on your Christmas List this year?



What goes "Oh,Oh,Oh?"

Father Christmas walking backwards!

As a little girl sat on Father Christmas's lap, he asked the usual "And what would you like for Christmas?"

The little girl stared at him for a minute, then gasped "Didn't you get my email?"



What does the Queen call her Christmas Broadcast?

The One Show!

That's all folks! (Sorry about our jokes, but perhaps we have saved you from queuing for Crackers!)