



**INGOLDISTHORPE VILLAGE WI
NEWSLETTER
MARCH 2023**

President's Message

An update to the change in committee roles. The full list will be on your 2023/24 programme, due out soon.

Sandie (Vice President), Carol (Minute Secretary), Barbara (Correspondence Secretary), Cath Roche (Programme Secretary)

Coronation Coffee and Cake is our next community event on Saturday 22nd April, £3 entry, open from 10.00 - 12.30. There will be lists out asking for helpers and cake / biscuit makers, if you can help in any way it is always much appreciated.

Keep a lookout in the Norfolk WI News magazine as we are about to send Norfolk Federation a write up and photograph from our recent Soup and Sandwich event. Lots coming up in our WI; Creative Writing competition, several outings, Healthy Living Day and more, details to follow. As always, make sure you look at the notices in case you want to sign up for anything.

Lesley



Finance

We would like to remind members that subscriptions for the year April 2023 to March 2024 are all due at the April Meeting. Membership this year is £46 and dual membership £22.60.

You can of course pay cash, or make a cheque payable Ingoldisthorpe Village WI. (It would be helpful if cheques could be made out in advance).

If members wish to pay by B.A.C.S the sort code is 090154 and the account number 32713484.

The Savings club is open to all members who wish to save throughout the year, maybe to pay for their membership, or for anything else you may wish to save for. You can deposit or withdraw at any time. Just see me at the table at the monthly meeting.

Pam



Trips and Outings

Our first coffee morning of 2023 at The Well was very well attended, members enjoyed a lovely get together and catch-up, our next one will be on Friday 31st March at 10.30 hope to see you there.

We are in the process of planning our trips for this year and a number of boards will be out at the March meeting for you to add your name to if you are interested in going. In April/May we are hoping to visit the Tapping House Tulip fields in Hillington followed by lunch or coffee depending on the time we can book tickets.

In May/June a visit to Watatunga Wildlife Reserve at Watlington for a guided tour by buggy or safari trailer, approx £16, followed by lunch. Finally in December a trip to Thursford Christmas Spectacular for the afternoon performance. The tickets are between £47 and £53, payment will be needed when we book.

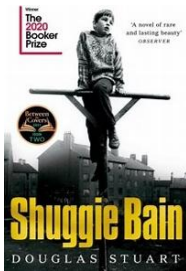
If you are unable to make the March meeting for any reason and would like your name added to any of the lists it would be helpful if you could let us know by phone or email.

Many thanks. *Sandie and Barbara*



WI Walk at Holt Country Park

There was much deliberation about going to Holt Country Park due to the inclement weather forecast. In the end the weather was kind and we had lovely blue skies and sunshine. We set out on one of the marked routes, visiting the pond first and then on to the two painted wooden men tugging at a rope - an ideal photo opportunity. There were other areas highlighted on the map. We managed to find the amphitheatre, arch, several wooden carvings of forest birds/animals, children's playground and picnic area. We then went on to 'Back to the Garden' for lunch which we all enjoyed (except the soup was a little peppery for some).



Book Review

Shuggie Bain by Douglas Stuart

The author drew on his personal experience as a 'queer' boy living with an alcoholic mother in Glasgow. His debut novel - surprisingly having not read a book for pleasure until he was 16, took him some 10 years to write and although rejected by more than 40 publishers, went on to win the 2020 Booker prize. It is a brutal story of love and addiction, at turns funny but extremely sad. Set in a deprived area of 1980's Glasgow, a time when most people were on benefits, it tells the story of a young gay boy trying to protect his alcoholic mother. Partly written in Glaswegian slang it is an emotional rollercoaster - the pain of loving someone with an addiction.

Lynda

Photo ID



From May 2023, voters will be required to show photographic identification at polling stations before they are given a ballot paper. You can apply for a Voter Authority Certificate in person, by post or online if you do not have any of the accepted forms of photo ID. The main ones you can use are: Passport, Driving Licence, Blue Badge, Older Person's Bus Pass or Disabled Person's Bus Pass. If you have any questions or require assistance applying for one, please contact Di on 07834 613 183 and she will be happy to help.

A Short Quiz (Answers next month)

1. Which King's Lynn building is believed to be the last remaining place William Shakespeare performed?
2. Norfolk is home to what is possibly the UK's largest colony of what flying creatures?
3. In what year was Nelson born?
4. How old was he when he first went to sea?
5. Which town commemorates its historic horse fair with the St. Winnold's Day Procession?
6. What is the King's Lynn Motorcycle speedway team called?