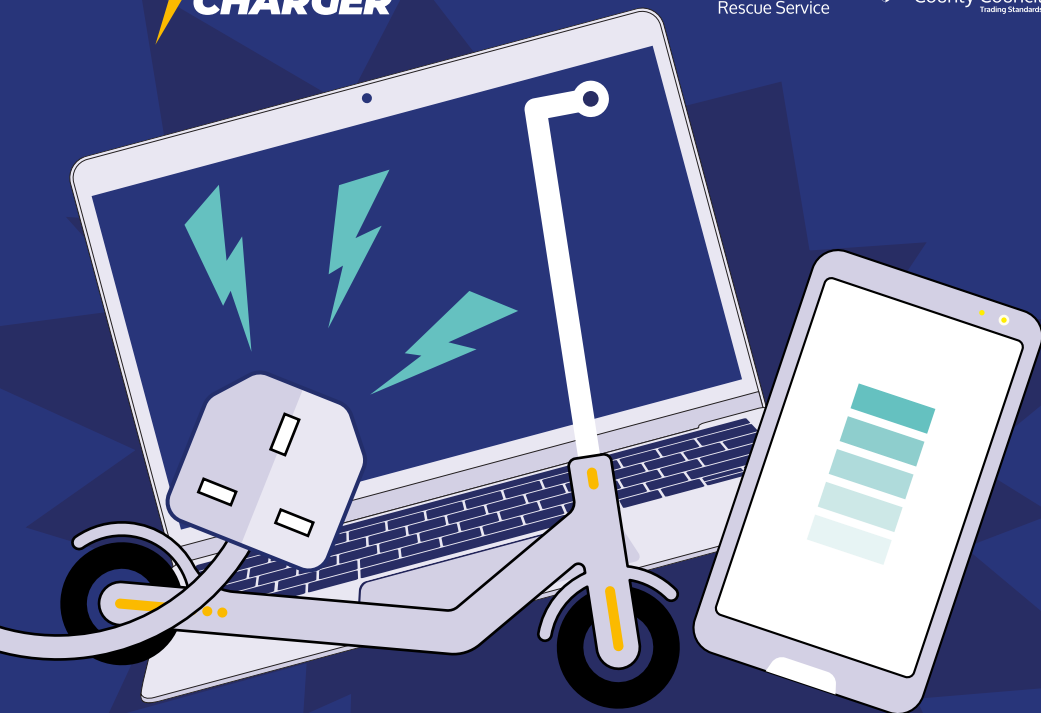




Norfolk Fire and
Rescue Service



Norfolk
County Council
Trading Standards



Stay safe when charging your electrical devices

Lithium-ion batteries are rechargeable batteries that can be found in everyday household electrical items, like mobile phones, tablets, laptops, vapes, cordless vacuums and power tools, as well as e-bikes, e-scooters and hoverboards.

Lithium-ion batteries can quickly cause ferocious fires. Follow these simple tips to keep you and your family as safe as possible:



Use the charger supplied with your device. If it breaks, only replace with one recommended by the manufacturer.



Charge your device on a flat, solid surface and never in an escape route. Never charge your device under your pillow – there is a chance it could overheat and catch fire.



Charge your device for the recommended charging time and no longer, so it doesn't overheat. Only charge devices when you are around and alert. Going out or being asleep means you won't be able to get help quickly if a fire breaks out.



Keep devices away from flammable materials (such as aerosols) while they are charging.



Charge and store lithium-ion battery powered vehicles such as e-bikes and e-scooters outside. If this isn't possible, charge in a closed room away from main living areas and always away from your escape routes – so not in hallways.



Damaged batteries are a fire risk – always check them before charging.

For more information, visit
norfolk.gov.uk/lithiumbatteries



Norfolk Fire and
Rescue Service



Norfolk
County Council
Trading Standards